

PORTUGAL EXPECTS GROWTH IN AQUACULTURE PRODUCTION – Market, Resources and Legislations

BUILDING GLOBAL INNOVATORS

Sustainable Ventures

Paulo Frias & Ricardo Nunes



Who are *we*?



2010

Beginning of MIT Portugal
Entrepreneurship and Innovation (E&I)
Initiative



Who are **we**?



2010

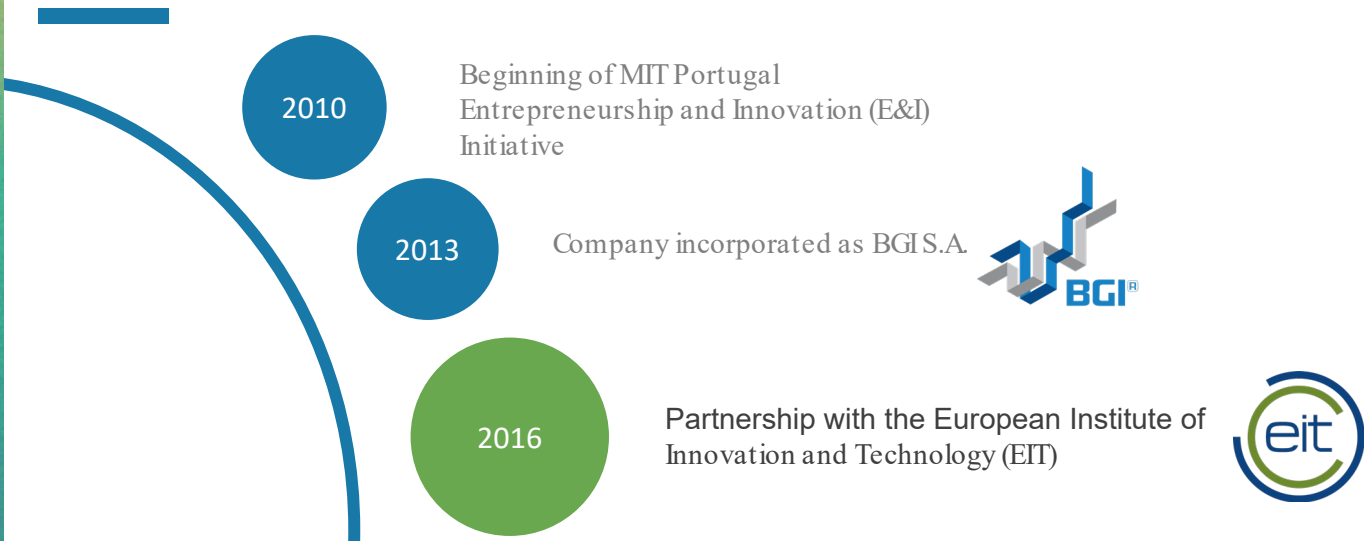
Beginning of MIT Portugal
Entrepreneurship and Innovation (E&I)
Initiative

2013

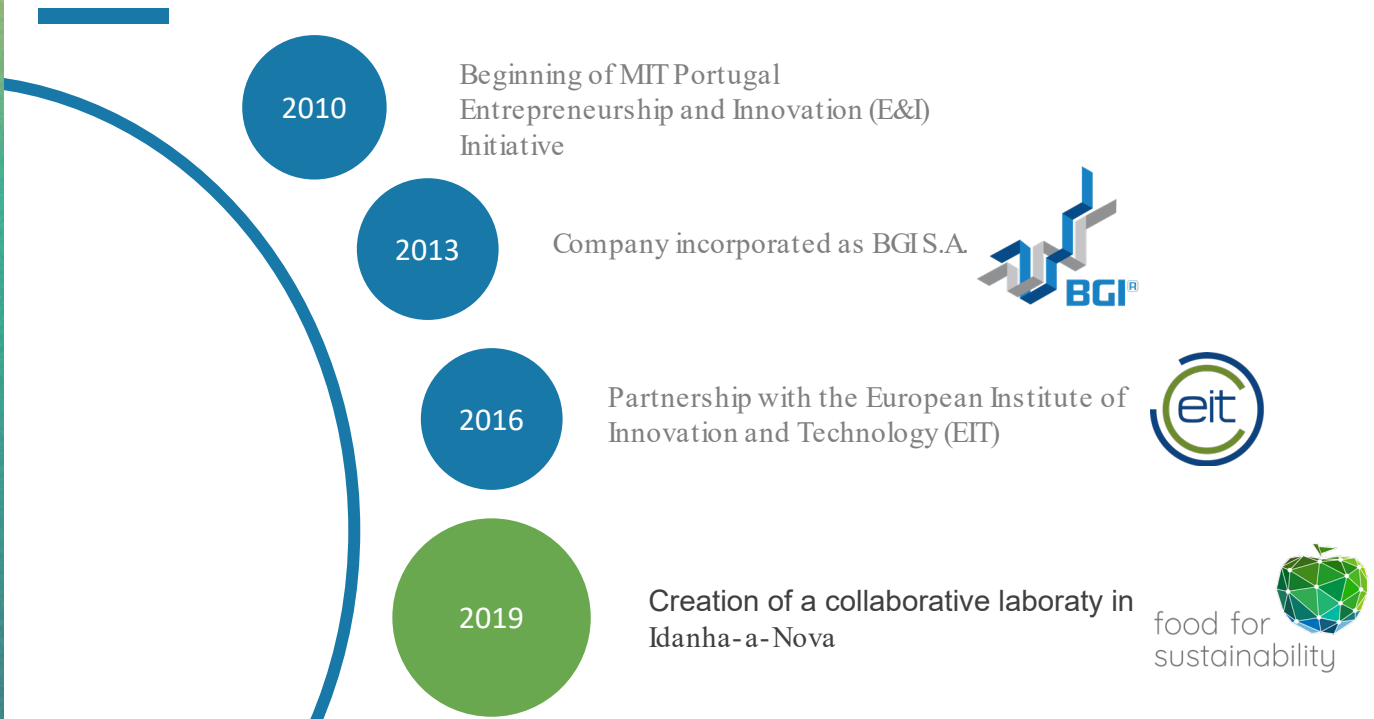
Company incorporated as BGI S.A.



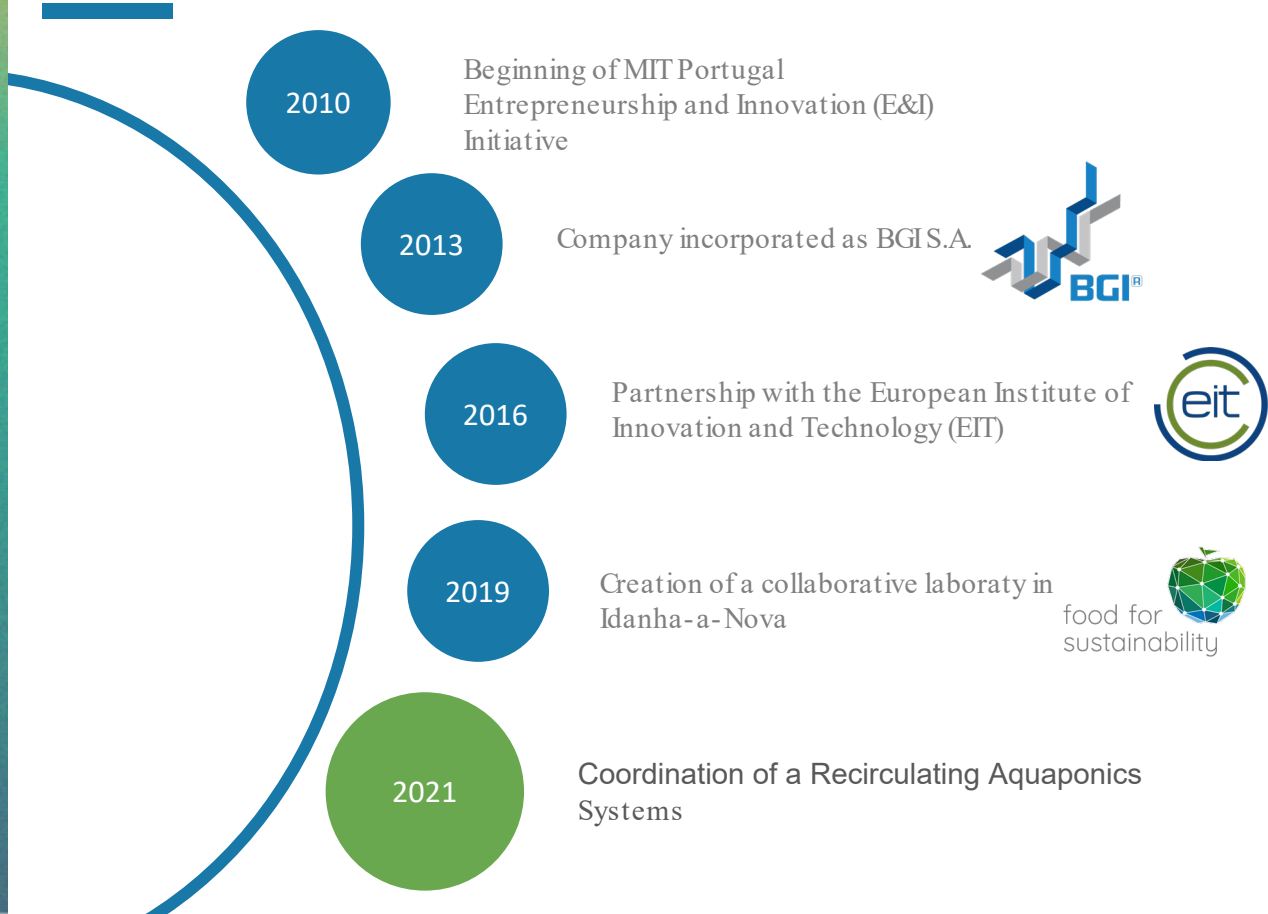
Who are we?



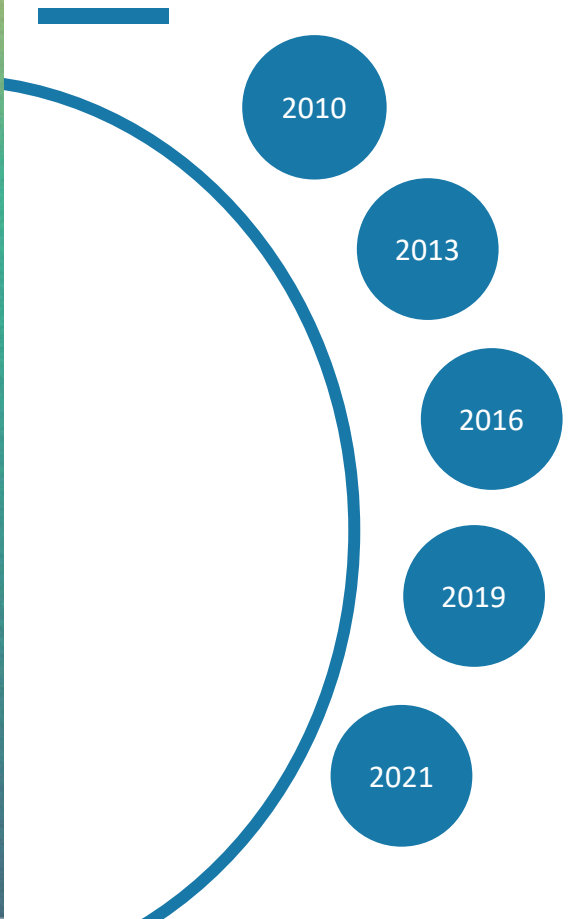
Who are we?



Who are we?



Who are we?



BGI in numbers

+€ 660M
Capital raised



+ 335
Startups accelerated



+ 70%
Survival Rate



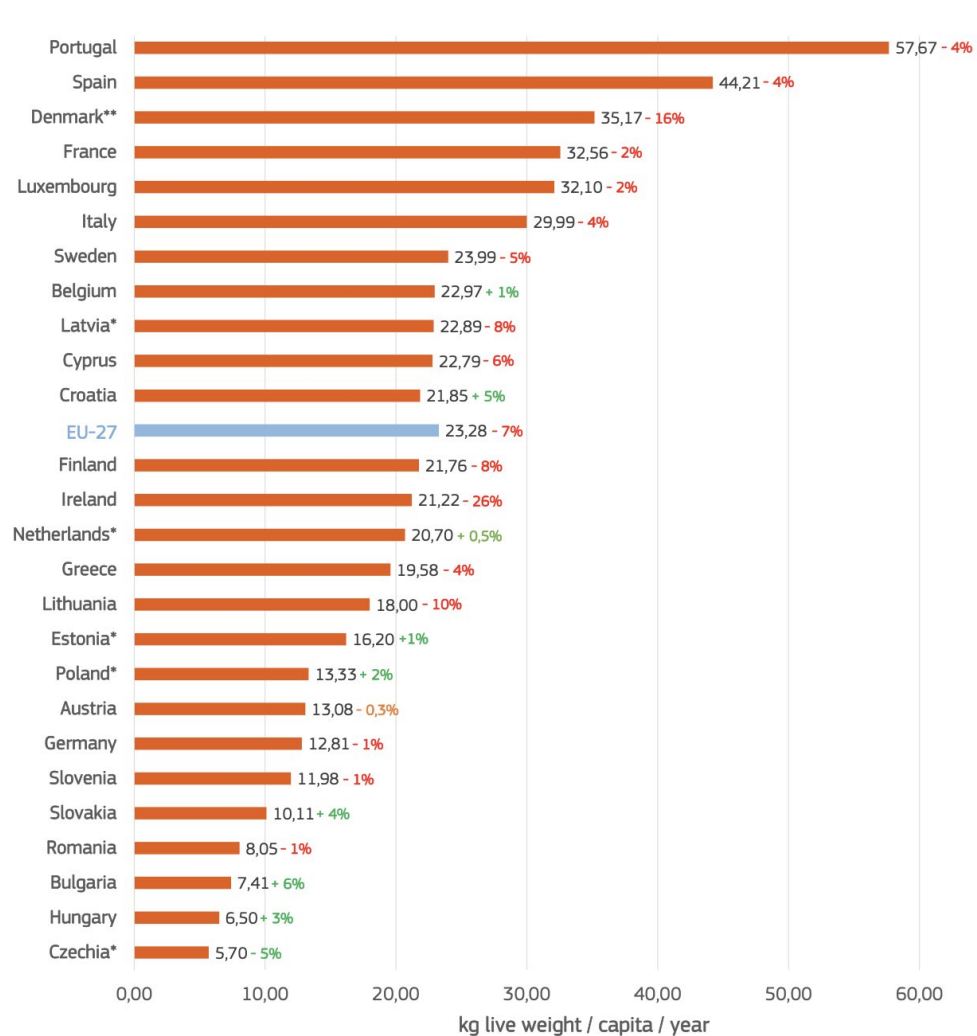
Blue Hub – Infrastructure Network for Blue Economy

“more competitive, more cohesive, more inclusive and more sustainable”

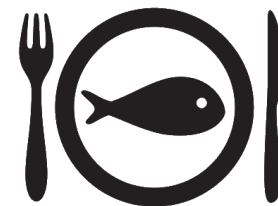
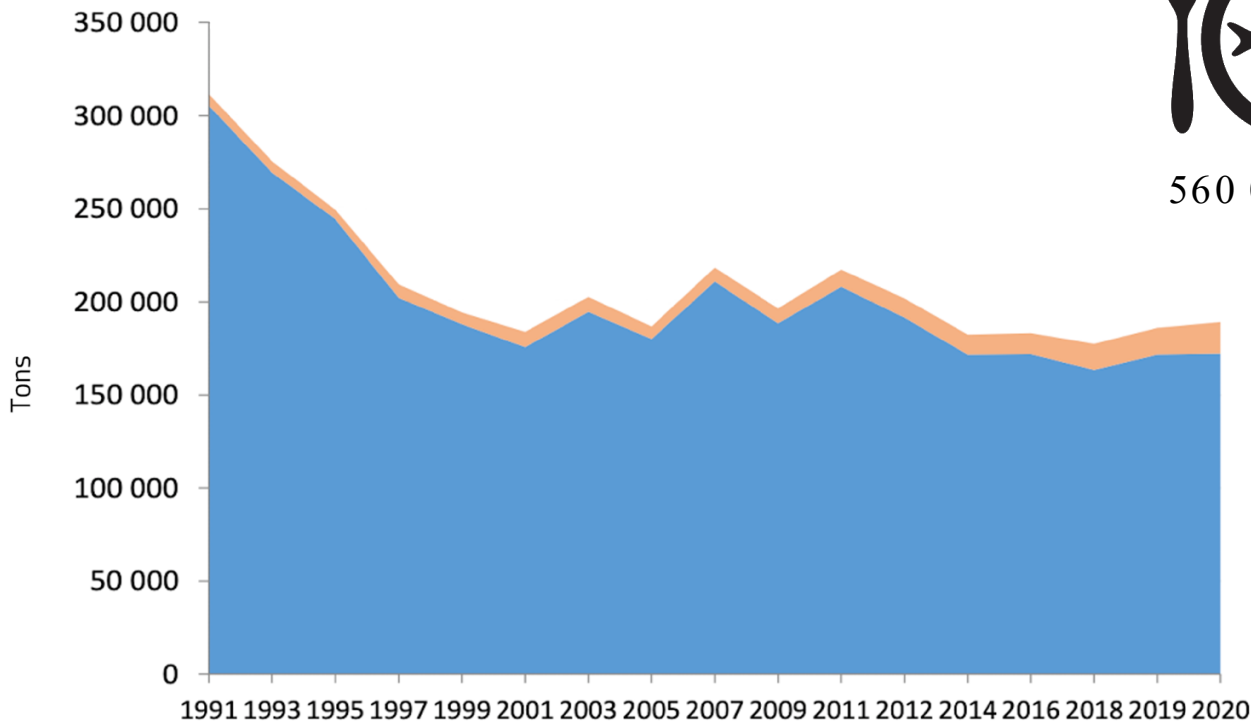


Fish consumption

Per capita consumption of Fishery and Aquaculture products (2020)

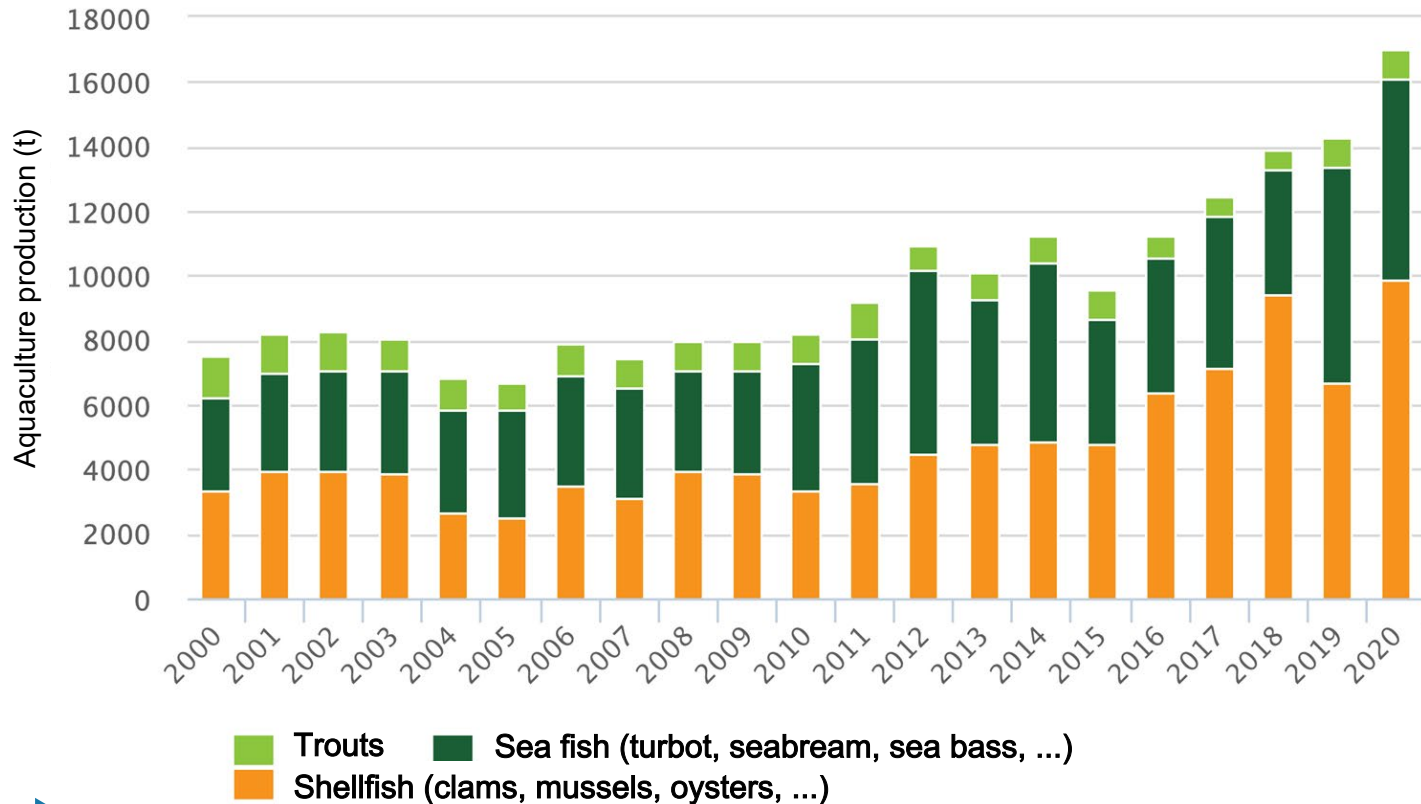


National origin of fishery products



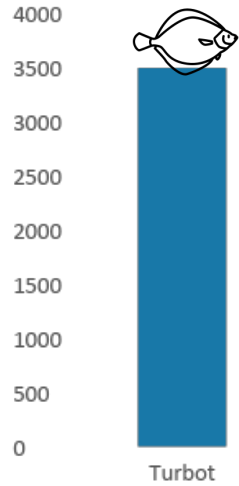
560 000 tons

Evolution of aquaculture production in Portugal

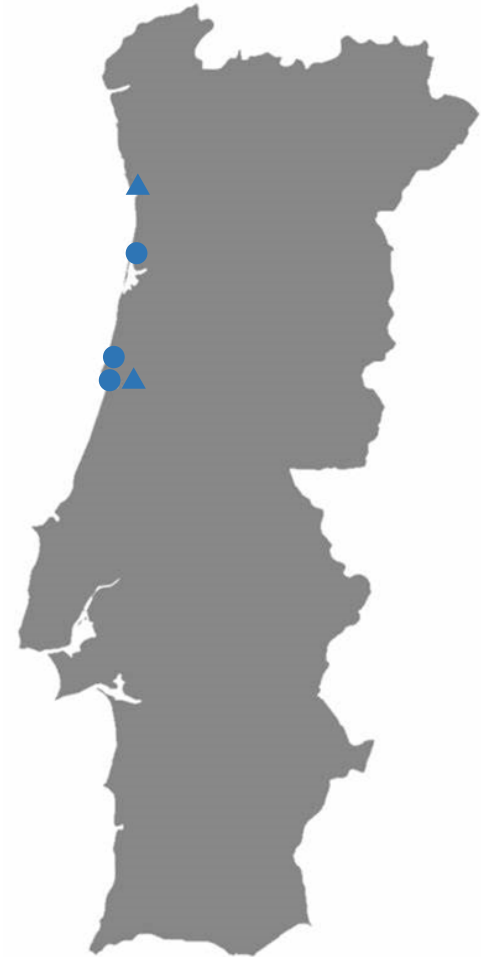


Source: INE/DGRM, 2022

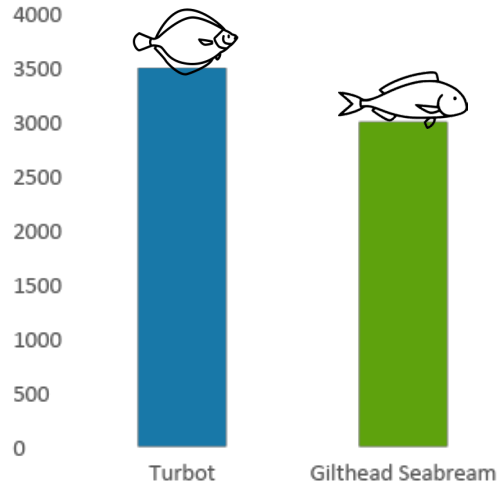
Aquaculture Numbers (Portugal)



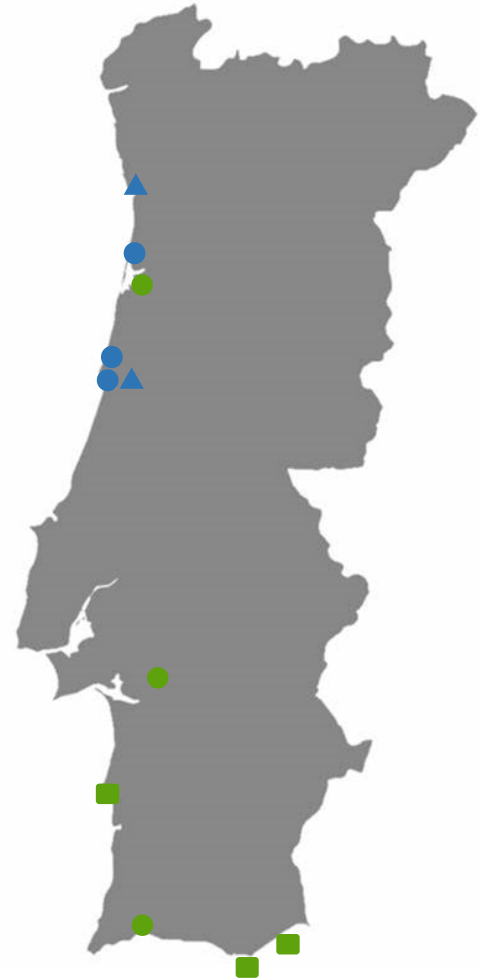
- ▲ Hatchery
- Grow-out
- Offshore



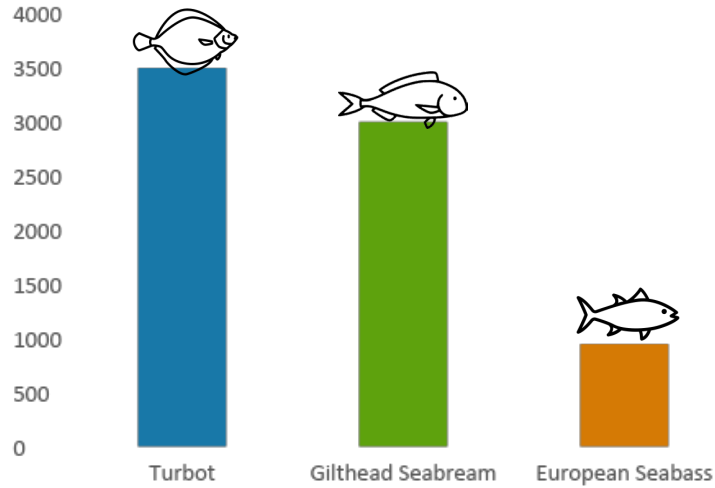
Aquaculture Numbers (Portugal)



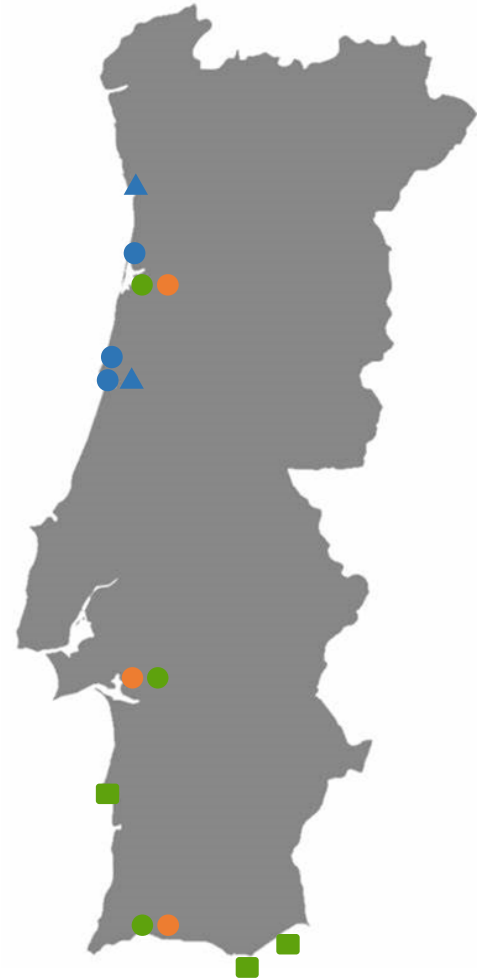
- ▲ Hatchery
- Grow-out
- Offshore



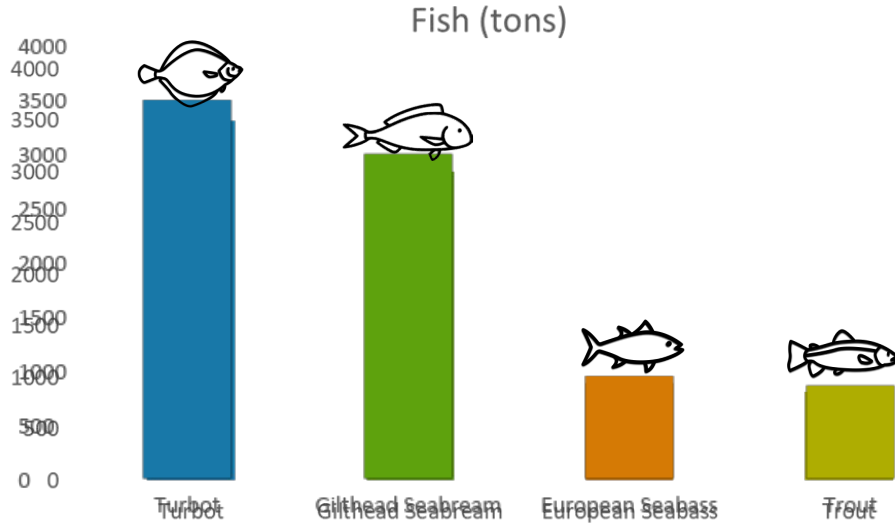
Aquaculture Numbers (Portugal)



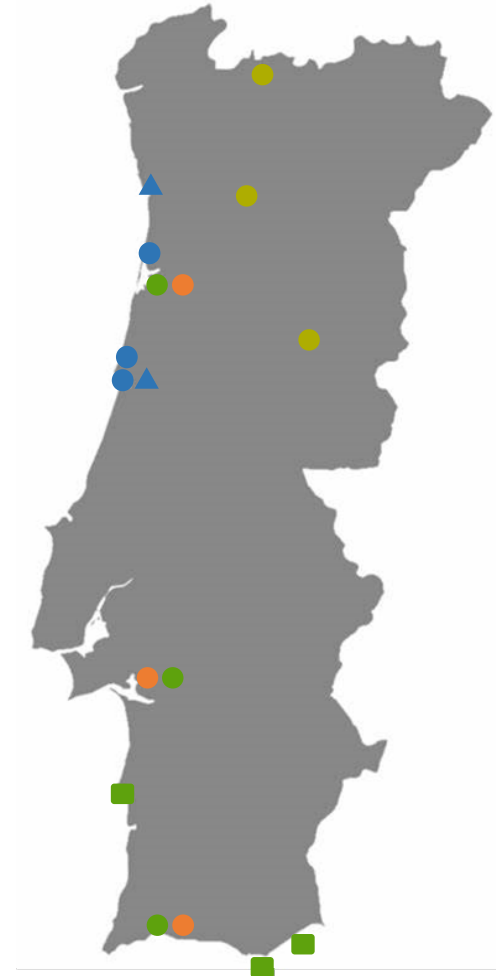
- ▲ Hatchery
- Grow-out
- Offshore



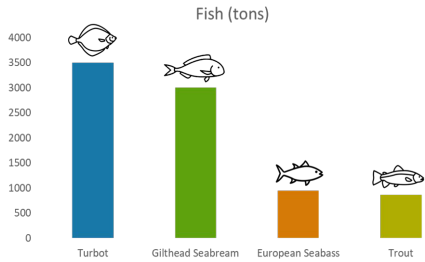
Aquaculture Numbers (Portugal)



- ▲ Hatchery
- Grow-out
- Offshore

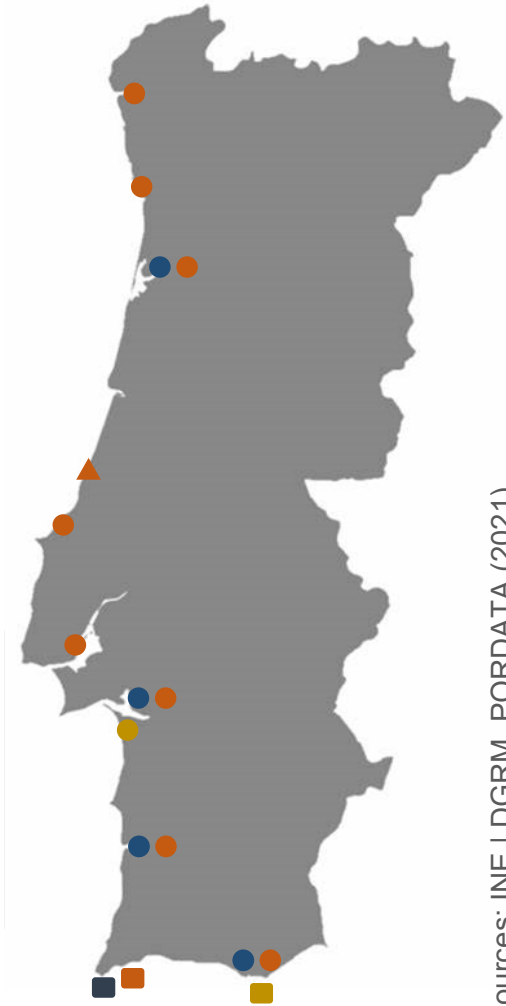
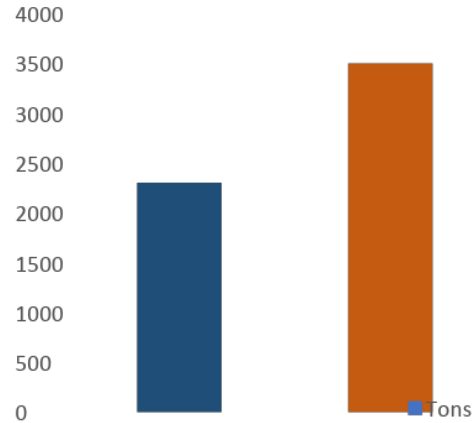


Aquaculture Numbers (Portugal)



- ▲ Hatchery
- Grow-out
- Offshore

Molluscs (Bivalves)



Strategic Plan for Portuguese Aquaculture 2021-2030

“Increase and diversify the supply of products from the national aquaculture based on principles of sustainability, quality and food safety, to meet consumption needs and contribute to the local development and the promotion of employment”



Strategic Plan for Portuguese Aquaculture 2021-2030

A – Facilitating Administrative Procedures

*Reducing the licensing
process to 90 working
days*

*Excluding the periods
needed to carry out an
Environmental Impact
Assessment (EIA)*

Strategic Plan for Portuguese Aquaculture 2021-2030

A – Facilitating
Administrative
Procedures

*Reducing the licensing
process to 90 working
days
Excluding the periods
needed to carry out an
Environmental Impact
Assessment (EIA)*

B- Facilitate Access to
Land and Water

*Offshore and inactive
estuarine areas
identified*

2 800 hectares



Strategic Plan for Portuguese Aquaculture 2021-2030

A– Facilitating
Administrative
Procedures

*Reducing the licensing
process to 90 working
days
Excluding the periods
needed to carry out an
Environmental Impact
Assessment (EIA)*

B- Facilitate Access to
Land and Water

*Offshore and inactive
estuarine areas
identified*



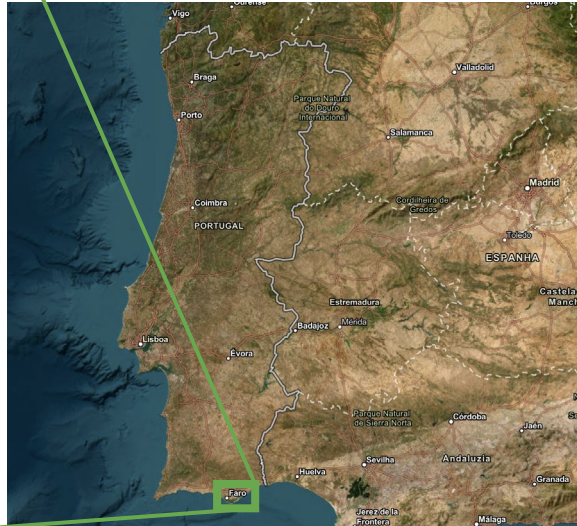
2 800 hectares

C- Strengthening the
competitiveness of
Aquaculture

*Mar2030– National
funds*



Strategic Plan for Portuguese Aquaculture 2021-2030

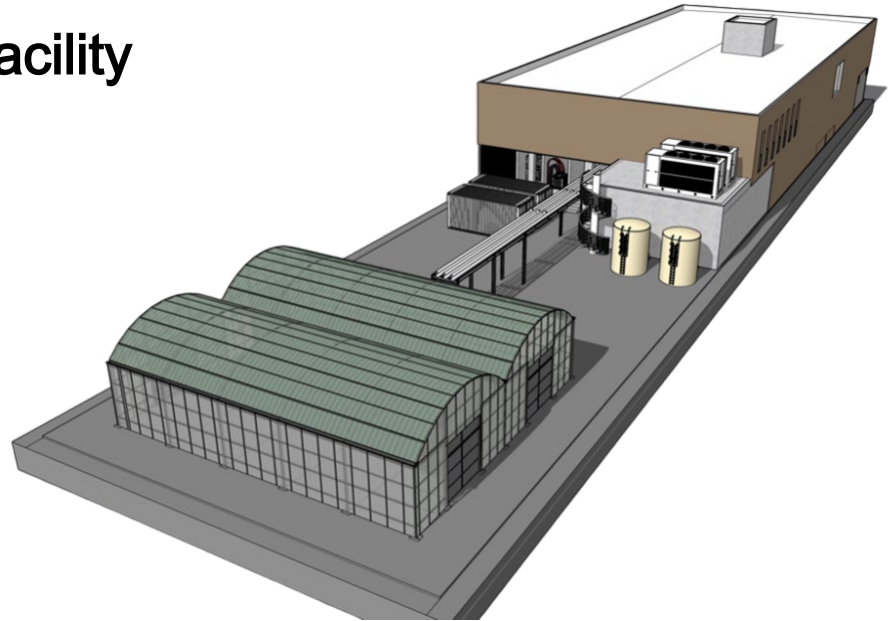


Pre-commercial Aquaponic facility

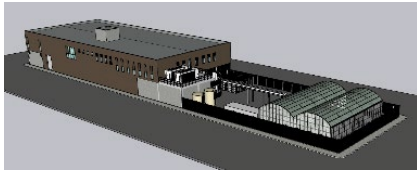
- Fish
- Vegetables
- Microalgae

Funded by:

- EEAGrants
- EITFood
- Resilience and Recovery Plan (PRR) – Portuguese National Funds



AmpliAqua layout

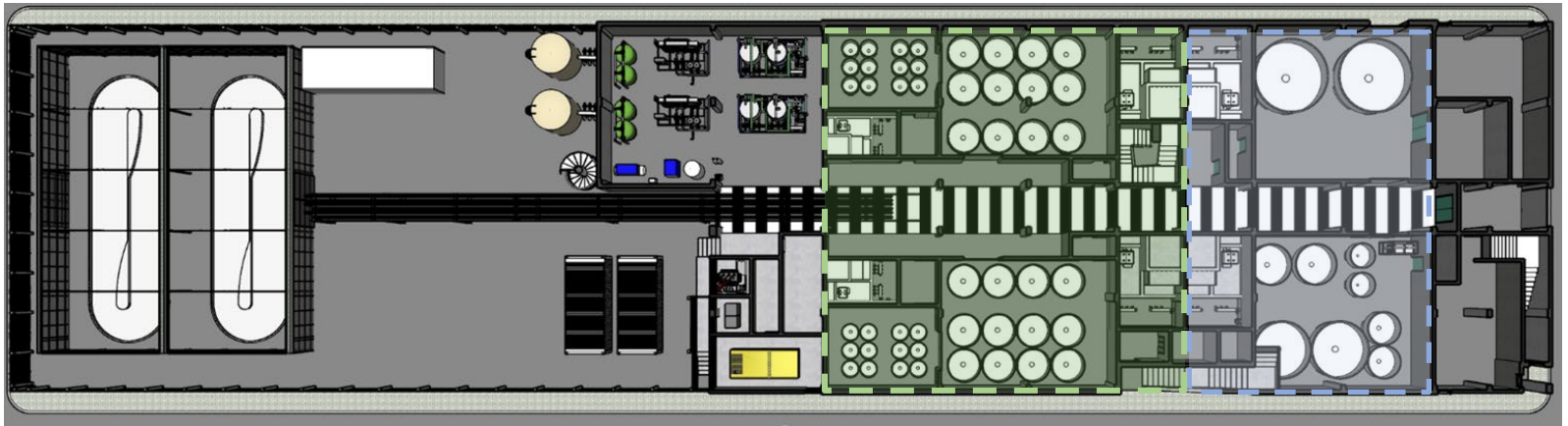


R&D Testing facility

Fish production

Fresh water & Salt water lines

Fresh & Salt water stage



Take home messages

BGI can help you:

- Find location
- Licensing
- Business plan
- Apply to public funds



Thank you for your attention

For more information contact us: geral@bgi.pt

Ricardo Nunes- ricardo.nunes@bgi.pt
Paulo Frias- paulo.frias@food4sustainability.org



Scan the QR Code
to download the
presentation.

[@buildingglobalinnovators](https://www.facebook.com/buildingglobalinnovators)



[@bgiaccelerator](https://www.instagram.com/bgiaccelerator)



[@bgiaccelerator](https://www.twitter.com/bgiaccelerator)



[@BGI-Building Global Innovators](https://www.linkedin.com/company/BGI-Building-Global-Innovators)

